

Strong Cold Front

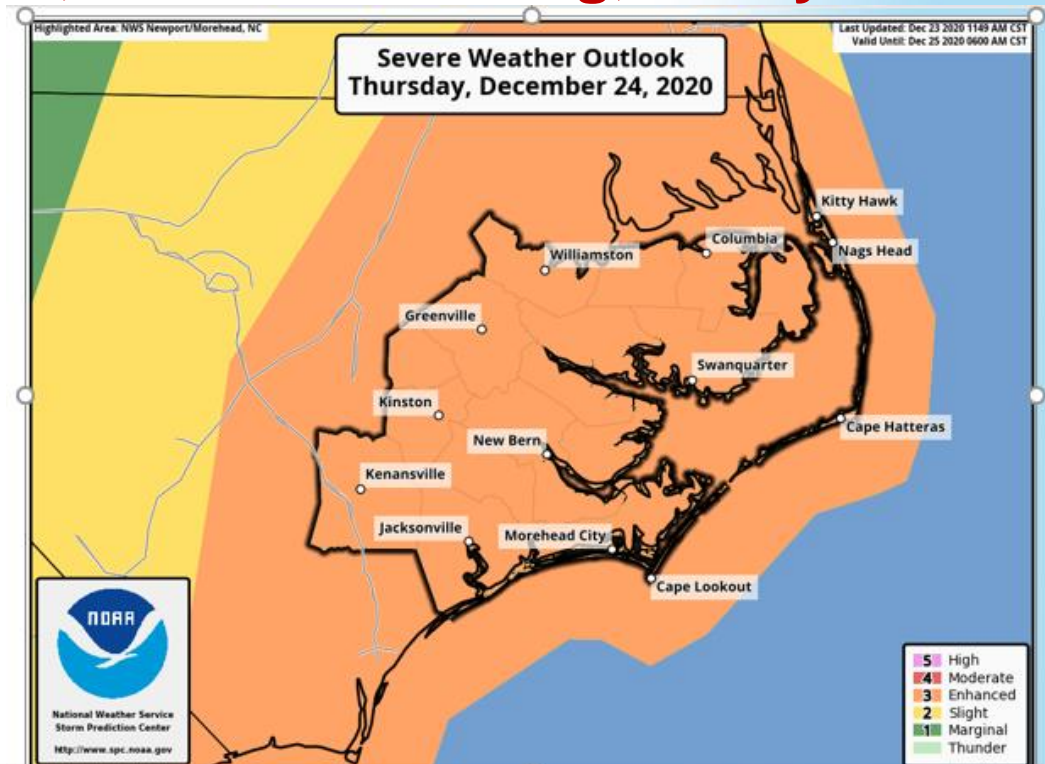
Impacts: Severe Weather, Coastal Flooding, Gusty Winds

Decision Support Briefing # 2

As of: 330 PM
December 23rd, 2020






What Has Changed?

- ✓ *Upgraded to Enhanced Severe Weather Threat*
- ✓ *Coastal Flood Warnings and Advisories Issued*
- ✓ *High Surf Advisories Issued*
- ✓ *Expanded Wind Advisories*

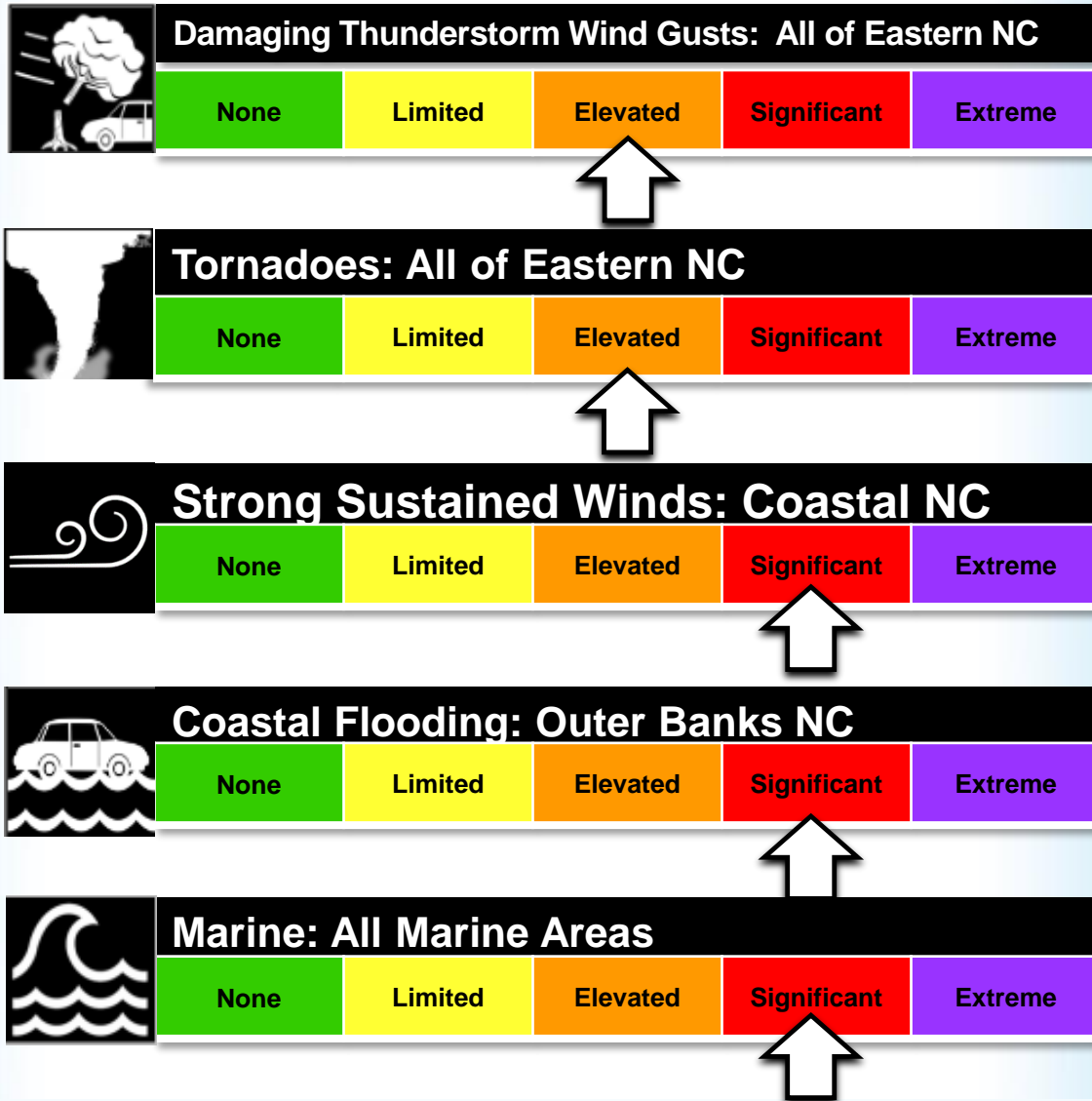


Thunder	Marginal	Slight	Enhanced	Moderate
No Severe Lightning still possible	Isolated Severe Storms Possible	Scattered Severe Storms Possible	Numerous Severe Storms Possible	Widespread Severe Storms Likely

Main Points

Hazard	Impacts	Location	Timing
Damaging Thunderstorm Wind Gusts 	<p>Localized downed trees and powerlines, and isolated structural damage associated with the strongest storms.</p>	<p>All of eastern North Carolina</p>	<p>Christmas Eve afternoon through early Christmas morning</p>
Tornadoes 	<p>Localized areas of enhanced damage with significant damage to structures and infrastructure.</p>	<p>All of eastern North Carolina</p>	<p>Christmas Eve through early Christmas morning</p>
Strong Sustained Winds/Gusts 	<p>Strong southerly winds could lead to wind damage and scattered power outages.</p>	<p>Coastal North Carolina, especially OBX</p>	<p>Christmas Eve through Christmas Day</p>
Coastal Flooding 	<p>Minor to moderate inundation of low lying areas. Greatest threat along the Outer Banks.</p> <p>Ocean overwash and beach erosion. Highest threat between Oregon Inlet and Ocracoke Island.</p>	<p>Locations adjacent to northern/eastern Pamlico Sound. Portions of Pamlico and Pungo Rivers, eastern Albemarle Sound, Crystal Coast</p>	<p>Christmas Eve through Christmas Day</p>
Marine 	<p>Very strong winds & dangerous seas.</p>	<p>All marine areas around eastern North Carolina.</p>	<p>Christmas Eve through Christmas Day</p>

Summary of Greatest Impacts

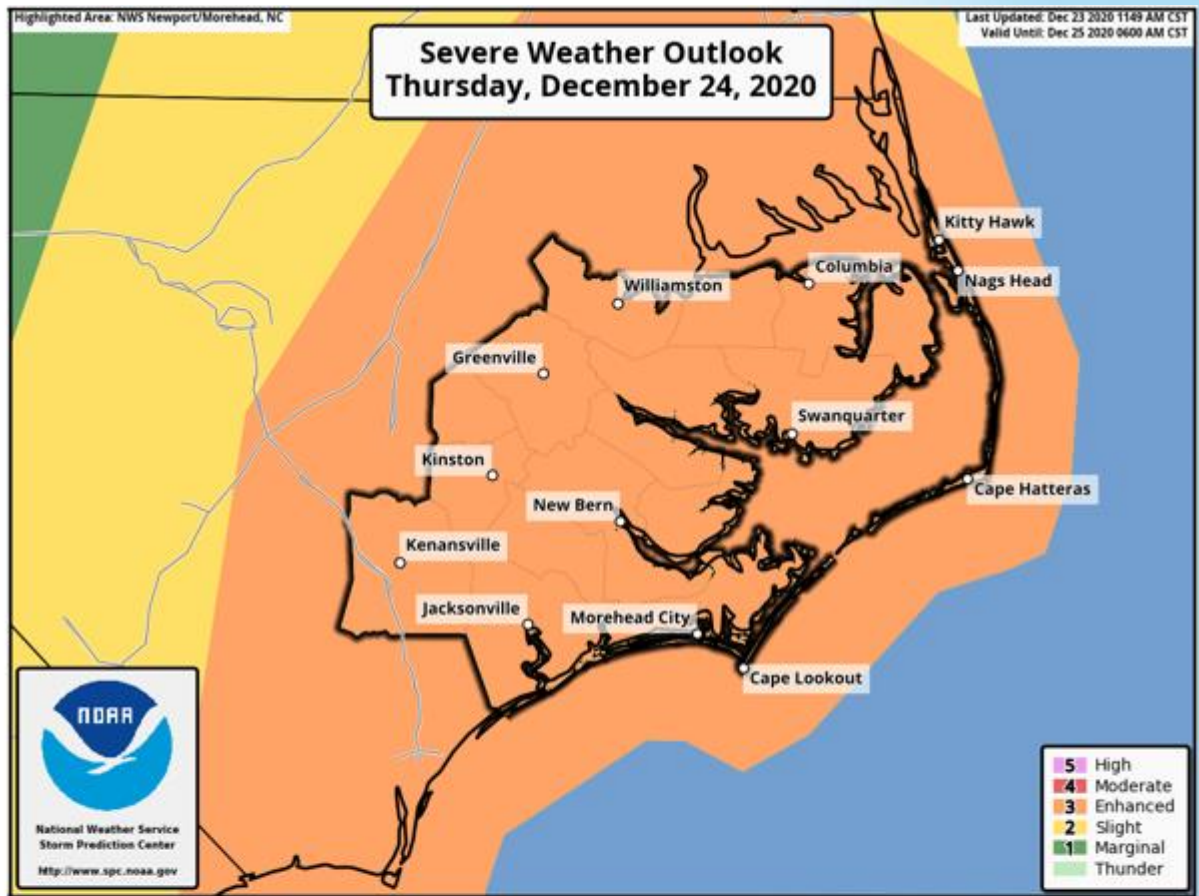


Timing:

Christmas Eve afternoon through early Christmas morning

Impacts:

- ✓ **Strong, damaging winds** in thunderstorms could lead to structural damage, trees down/uprooted, and power outages.
- ✓ **Isolated tornadoes are possible**, resulting in areas of enhanced damage.



Thunder	Marginal	Slight	Enhanced	Moderate
No Severe Lightning still possible	Isolated Severe Storms Possible	Scattered Severe Storms Possible	Numerous Severe Storms Possible	Widespread Severe Storms Likely

Max Wind Gusts

Christmas Eve through Christmas Day

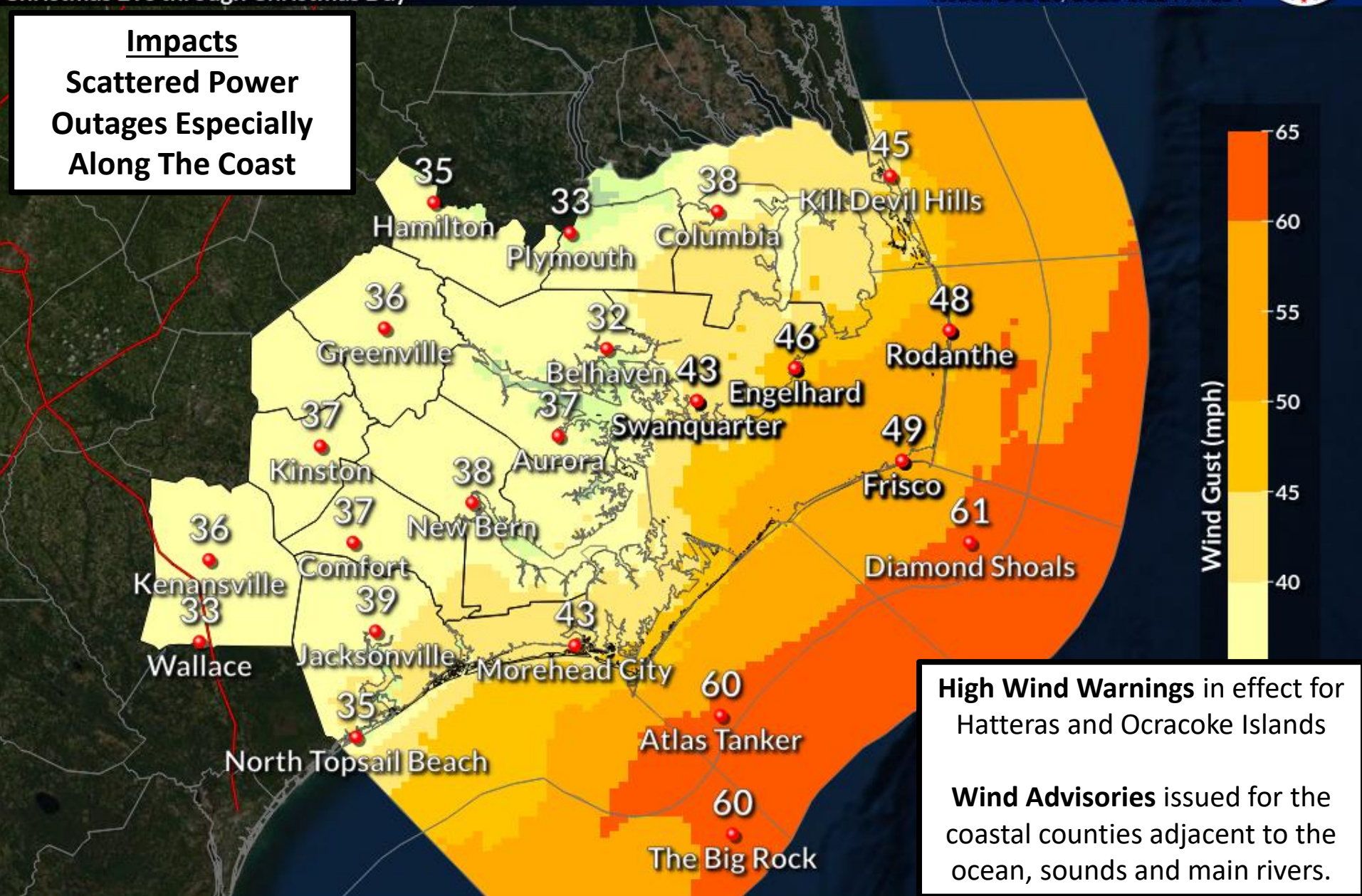
Weather Forecast Office
Newport/Morehead City, NC

Issued Dec 23, 2020 1:12 PM EST



Impacts

Scattered Power Outages Especially Along The Coast



High Wind Warnings in effect for Hatteras and Ocracoke Islands

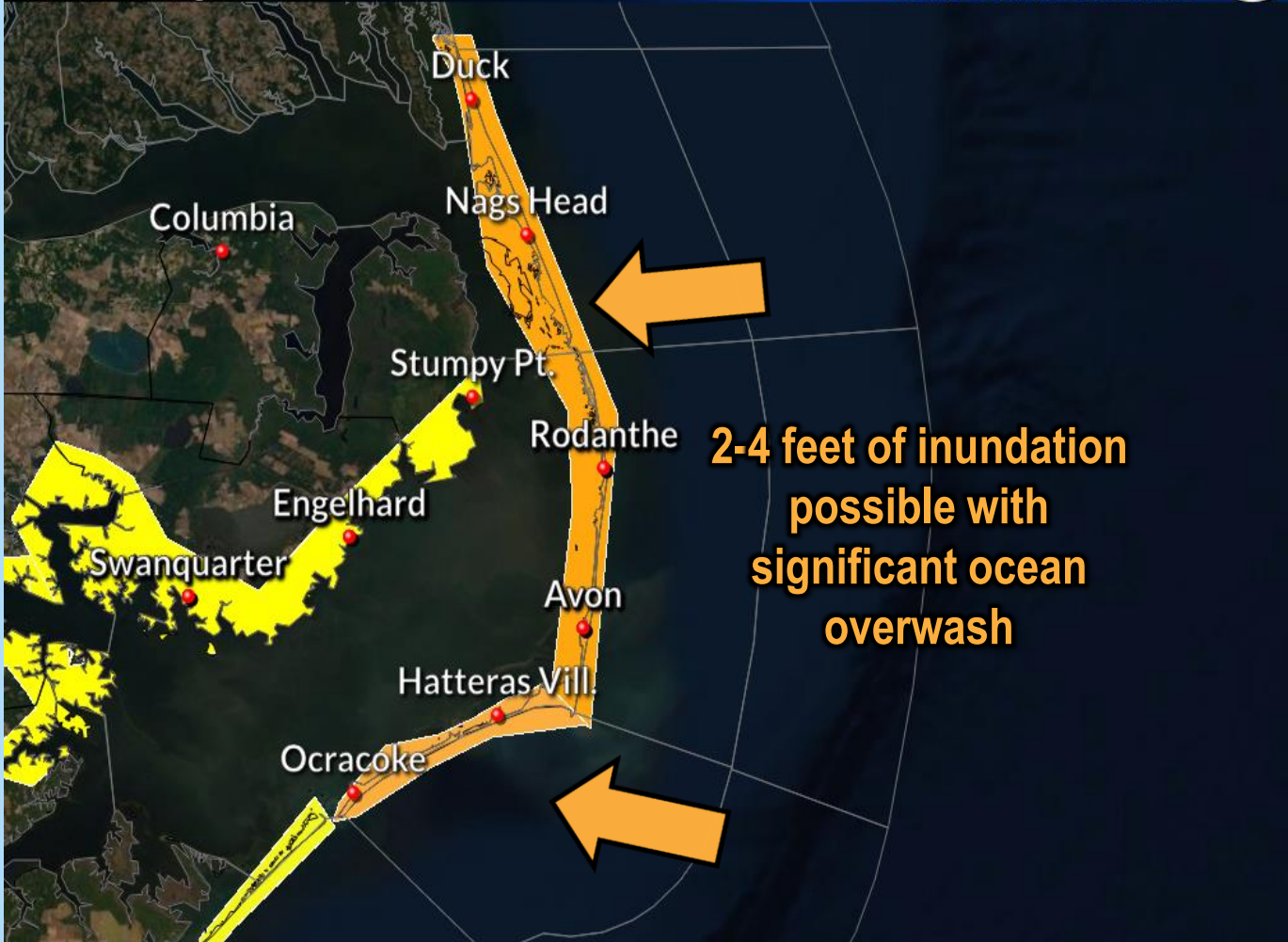
Wind Advisories issued for the coastal counties adjacent to the ocean, sounds and main rivers.

Coastal Flooding and Ocean Overwash along the Outer Banks

Moderate Flooding Possible

Weather Forecast Office
Newport/Morehead City, NC

Issued Dec 23, 2020 1:30 PM EST



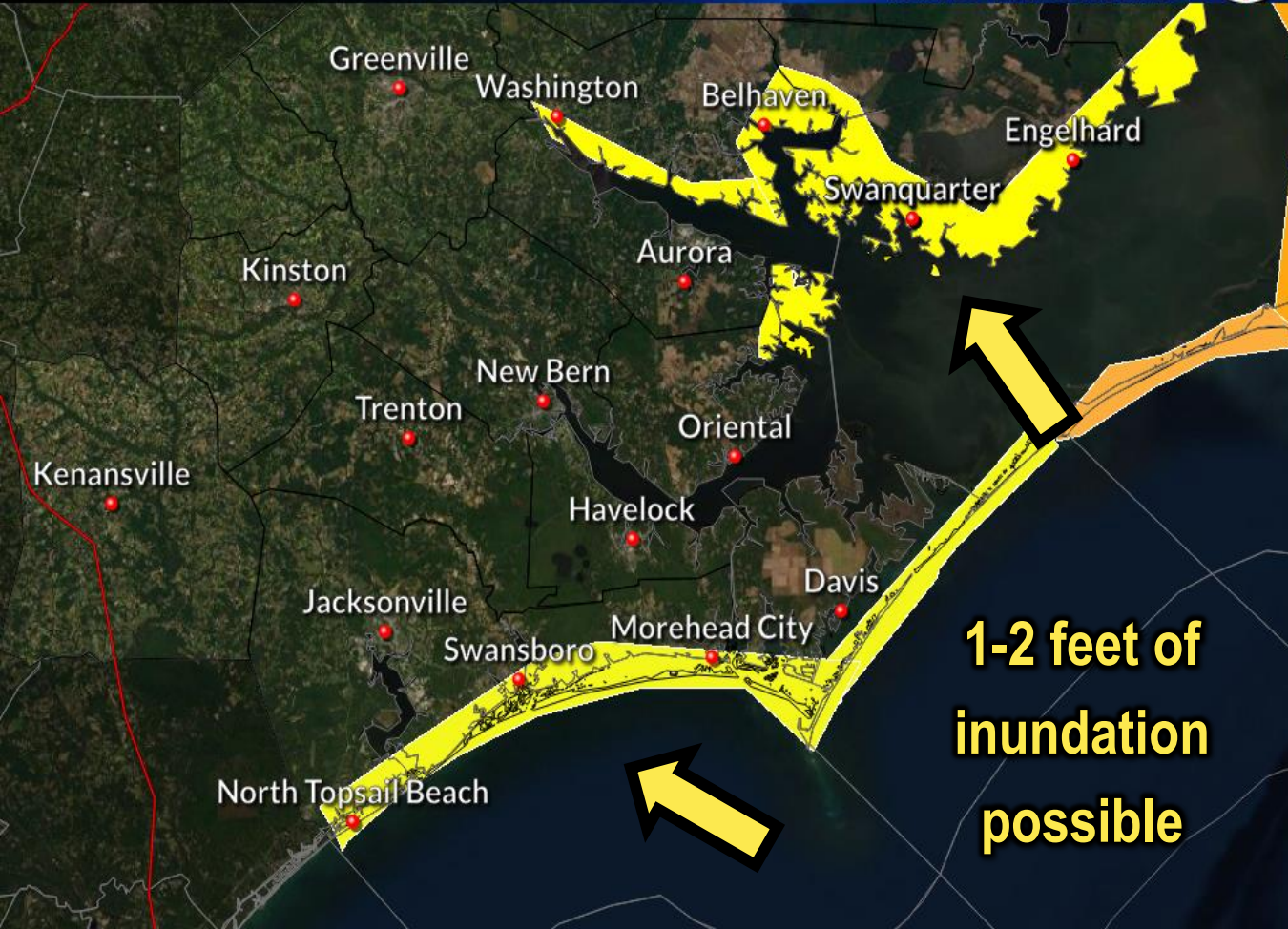
@NWSMoreheadCity

weather.gov/moreheadcity

- Soundside flooding threat is highest between Nags Head and Cape Hatteras.
- Moderate to Significant ocean overwash is expected, especially during high tide, from Oregon Inlet down to Ocracoke Island. Highway 12 will likely be impassable at times.
- Beach erosion is also likely with 8 to 12 foot waves.

Minor Coastal Flooding Expected

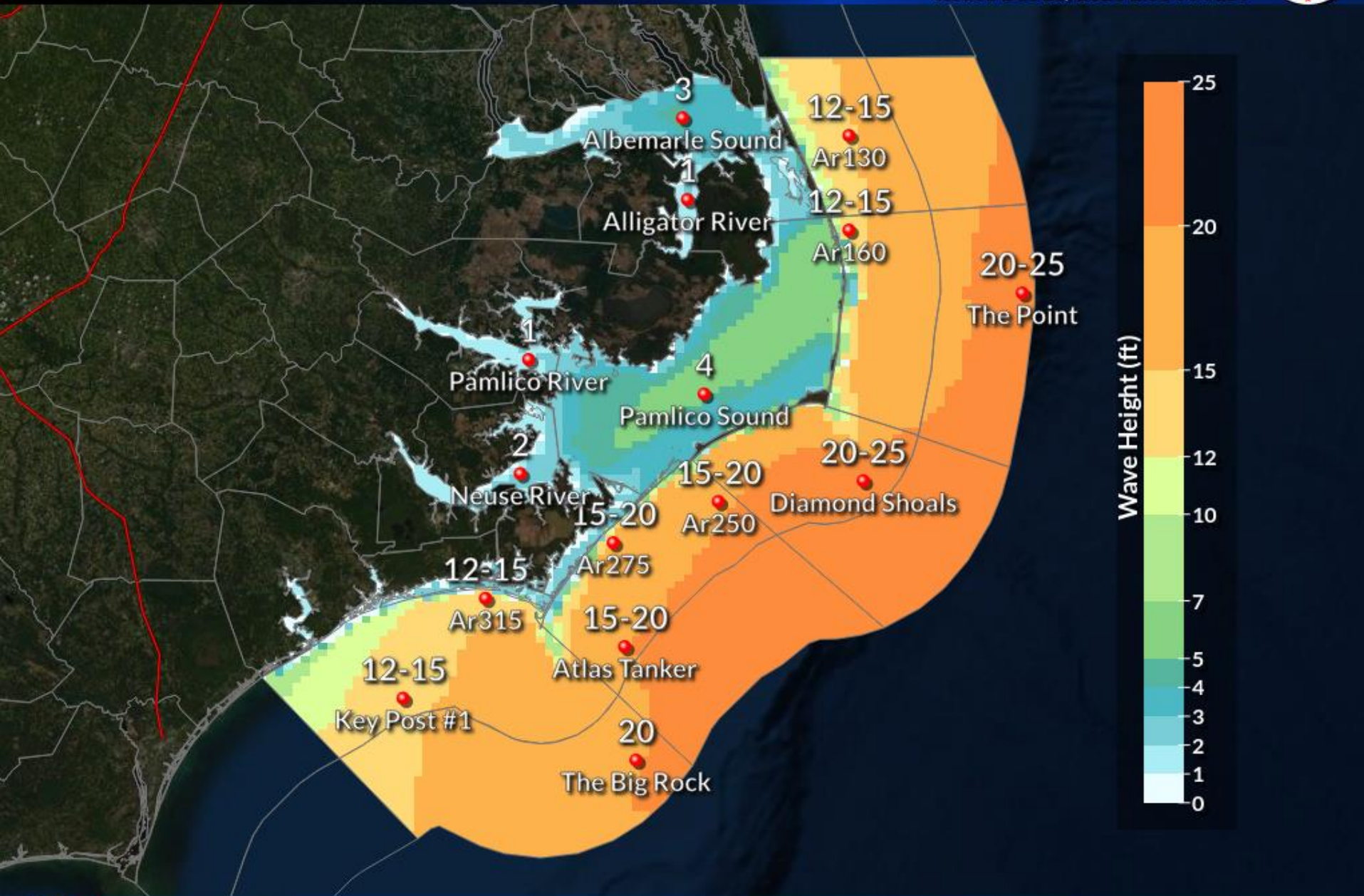
Weather Forecast Office
Newport/Morehead City, NC
Issued Dec 23, 2020 1:52 PM EST



**1-2 feet of
inundation
possible**

- Minor coastal flooding is expected (1-2 ft agl) for areas adjacent to the N/NE Pamlico Sound, Pamlico and Pungo Rivers.
- Minor coastal flooding (1-2 ft agl) for areas on the ocean side from Ocracoke Inlet to Surf City

Max Wave Heights



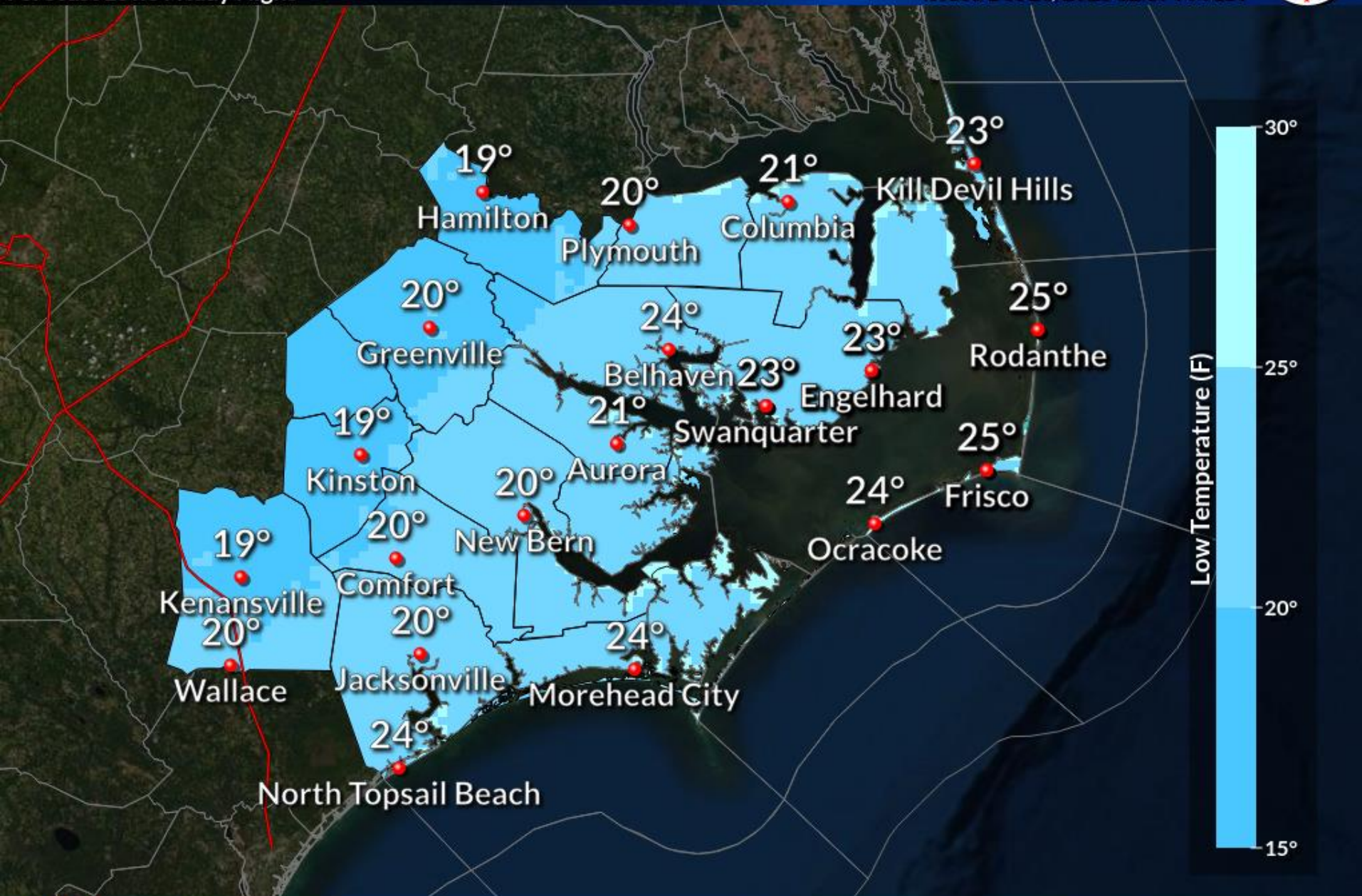
Very Cold Temperatures This Weekend

Weather Forecast Office
Newport/Morehead City, NC



Forecast Lows Friday Night

Issued Dec 23, 2020 12:07 PM EST



Event Summary

Threats for Severe Weather, Strong Winds, Coastal Flooding *Christmas Eve through Christmas Day*



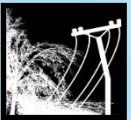
Strong, damaging winds in thunderstorms could lead to structural damage, trees down/uprooted, and power outages.



Isolated Tornadoes possible, resulting in areas of enhanced damage.



Moderate to minor coastal flooding expected for locations adjacent to ocean, inland sounds and tidal rivers. Additionally, ocean overwash and beach erosion are likely along the coast, with the main threat from Oregon Inlet to Ocracoke Island.



Southerly wind gusts up to 50-60 mph expected along the Outer Banks, with wind gusts 40-50 mph expected elsewhere along the coast.

Contact and Next Briefing Information



Next briefing can be expected by 7 AM Thursday

[Briefing Webpage](#)



Web:

[weather.gov/moreheadcity/](http://www.weather.gov/moreheadcity/)



Phone (public):

(252) 223-5737 ext. 6



E-mail:

wxobs.mhx@noaa.gov



Facebook:

[NWS Newport/Morehead City](https://www.facebook.com/NWSNewportMoreheadCity)



Twitter:

[@NWSMoreheadCity](https://twitter.com/NWSMoreheadCity)



YouTube:

[NWSMoreheadCity](https://www.youtube.com/NWSMoreheadCity)

Disclaimer: The information contained within this briefing is time-sensitive, do not use after 7 AM December 24th